



VICTOR GREEN & COMPANY was founded in 1986 to provide meticulous, resourceful and cost-effective information retrieval and analysis in all fields of science, industry and technology.

There are many situations where it is legally advisable or commercially useful to search through existing patents and patent applications, registered designs or technical literature. Our bespoke reports can aid in all aspects of the identification, exploitation and enforcement of intellectual property rights.

We can help you whether you are:

- a legal professional wanting all the information needed to advise your clients on due diligence and other IP issues
- a university, research institute or public sector organisation applying for or awarding grants to develop new ideas
- a venture capital company deciding whether to fund a start-up with new or disruptive technology content.

OUR APPROACH

For a more detailed account of the resources we employ and examples of the skills involved in searching, please download ['Our Approach to Searching'](#).

OUR SERVICES

We search through patents and patent applications, registered designs and technical literature. The most frequently used services are listed below. Our searches generally cover worldwide publications, but can be limited to the documentation relevant to specific territories.

CONTACT US

Please contact us to request a free estimate or to discuss how we may be able to help you.

request@victorgreen.co.uk
+44-(0)20-7269-9200
+44-(0)20-7269-9210
www.victorgreen.co.uk



[Victor Green & Company](#)

[Victor Green & Company](#)

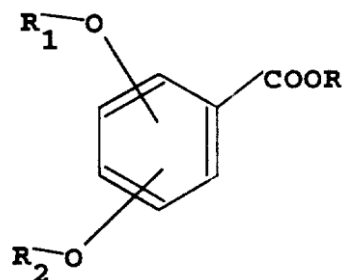
First Floor, 25 Angel Gate, City Road, London, EC1V 2PT, England

OUR SERVICES (cont.)

Infringement / Freedom-to-Use / Freedom-to-Operate Search

Assists in establishing whether elements of your product, design or the process that you want to use, are already protected by another party. This type of search helps to avoid costly legal challenges and misguided product launches. Our report will list publications which you may risk infringing. This list could also help you identify patents or designs to licence, or perhaps change how you develop your product or influence where you manufacture and market. Patents within the infringement period that are not in force, but which may clear your right-to-use by virtue of being in the public domain, are also reported. We can also

provide the legal status for any IP identified. When this type of search is followed up with a validity search against any highly relevant patents identified, it is sometimes referred to in the USA as a 'clearance search'.



Patentability or Design Registrability Search

Assesses the patentability of your new product or process or the validity of a particular design. Our search will look to find all documents relevant to its novelty, or obviousness in the light of the discovered prior art. This type of search is performed before filing or registration, or before seeking commercialisation. It can help to decide how you should draft your patent claims or whether to file an application at all, thereby reducing unnecessary costs and delays in the filing process.

Validity / Prior Art Search

Confirms whether a patent or design (either yours or a competitor's) is valid with respect to the prior art. For patent validity this may cover both patent and non-patent literature. If relevant prior documentation is found that was not located by the examiner, the patent can then be opposed or revoked on the basis that it was incorrectly granted. Validity searches are therefore useful if a competitor is considering infringement proceedings. Alternatively, if you want to take legal action for infringement of your own patent, or are approaching a company to arrange a licensing deal, a validity search may be required to decide if the patent in question is vulnerable to legal challenge. We can also verify the date of public availability of documents if this is required for court proceedings.

Chemical Structure / Biosequence Searches

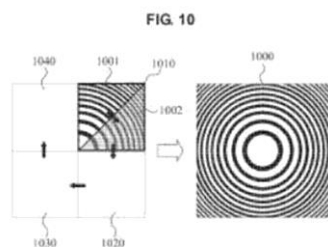
Where required we offer chemistry substructure searches to retrieve chemical substances, and peptide or nucleotide sequence searching for biotechnology subjects.

State of the Art / Collection Search

Establishes what has already been done and what solutions are available in a technology area. With so many innovative products and processes under research or development, research and funding organisations find it useful to see an overview.

Landscape / Mapping

Reviews the state of technology in a particular field, deriving trends, statistics and visualisations, and identifies potential gaps in the technology that could be exploited.



Apparatus and method for fast generation of three-dimensional hologram
US2015286186 Samsung Electronics PD 08 Oct 2015

Data Mining

One use has been to identify corporations or law firms that are suitable targets for marketing, and to assess their patenting activity.

Inventor / Assignee / Proprietor Name Search

Discovers what your competitors are patenting and reveals their registered designs. Both standard and non-standard names are searched (i.e. variations arising from misspellings, transliterations, translations and abbreviations), and company histories are investigated to determine parent companies, subsidiaries and acquisitions where appropriate. Our report can list all documents in an inventor or assignee name, or can be limited by subject matter.

Legal status

Establishes the legal status of patents or designs, including for example, determining if a patent is in force, if opposition proceedings have occurred, and if maintenance fees have been paid. Online status can be determined from the registers of the Global Dossier, UK IPO and numerous other patent offices, whilst for other countries we can obtain the INPADOC status or use associates to determine official status.

Patent Family Checking

Identifies related patents by investigation of patent families; these being a collection of published patent documents relating to the same invention, or to several inventions sharing a common aspect, that are published at different times in the same country or published in different countries or regions. This type of search can establish the territorial coverage and technical scope of a particular patent family.

Watching Searches / Competitor Monitoring / Technology Monitoring

Watching searches allow for a regular watch to be kept on what the competition is doing. The publication and grant of patents or designs in a particular name or technical subject area can be regularly or continuously monitored to provide an alert as soon as a new development takes place.

Document Location and Supply

Useful if you have already identified a patent or technical literature document that may be of interest, but are unable to source a full copy. We can supply these quickly and at low cost.

Services not listed above may be provided on request.

OUR APPROACH

Flexible

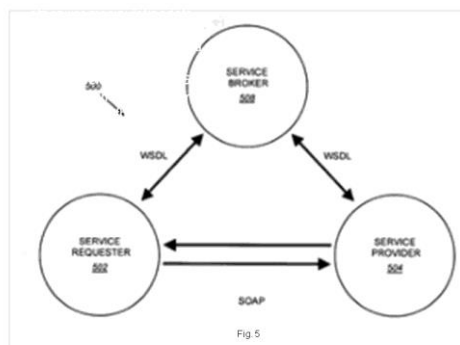
We tailor each of our searches, via the development of innovative strategies, to meet the precise budgets and deadlines of our clients, providing results that will be relevant to every need and circumstance. We can work collaboratively with you throughout the searching process, keeping you updated with interim reports should you wish. Alternatively, we can take full control of the searching process from instruction through to reporting. We will also work alongside in-house expertise for those who do not need a more proactive service. Our flexible and iterative searching approach means that we can adjust our strategies according to early findings. Our experience and capability mean that you can be confident that the results will exactly meet your needs.

Confidential

You can be assured that all information supplied to us will be kept strictly confidential, and will comply with any non-disclosure agreements. All databases and communications systems used have appropriate security measures, and when it is necessary to use internet search engines that could compromise confidentiality, we carefully select search terms that avoid revealing your inventions, projects or interests. We have protocols to control all stages of data flow.

Resourceful

We do not follow a prescribed path in designing our searches. The timeliness, coverage, cost and technical suitability of each database and resource available to us is assessed according to the circumstances of each search request. We are also happy to take enquiries beyond the confines of the library or the internet. In addition to using classes, text and structures, we can search images and numerical parameters if required.



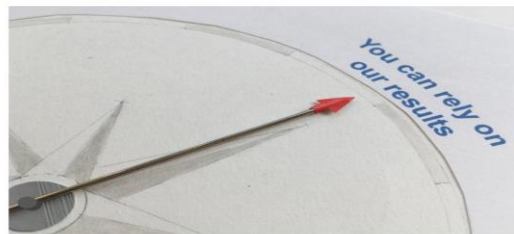
Enhanced syndication
 US2006173985, NewLife Media Group Inc, PD 3 Aug 2006
 A variety of tools and techniques are disclosed for managing, viewing, publishing, searching, clustering, and otherwise manipulating data streams.

Skilful

Searching is a highly skilled art requiring considerable experience and knowledge. The untrained or occasional searcher often fails to locate important documents since the complexities involved in searching are not fully appreciated. For example, a thorough understanding is required not just of the subject to be searched, but also of the various database command languages, potential search methodologies, patent classification systems, and patent jargon (e.g. "energy storing means" to mean "spring"). An untrained searcher cannot be sure of the scope and reliability of their search, or of the possibilities for further searching that might exist. Our approach of using a carefully selected spectrum of overlapping databases, classifications and search strategies, enables us to achieve a very high standard of reliability. Individual documents from many countries and in many languages are inspected, and their relevance to the request assessed. We continually review and update our practises, taking advantage of the most recent developments in database technology and searching techniques.

the needs of individual clients. By having the searcher compile the report, value is added in the form of comments and notes.

We can also provide the report in various file and presentation formats. Interim reports can be provided upon request so that you can assess the results in a progressive fashion.



Our detailed and easy to understand reports usually cover a minimum of:

- the subject being searched for
- the area of the search
- full details of the search strategy used
- a full list of all the relevant documents
- PDF specification copies of all reported documents (optional)

You will have a named contact for each project so that you can directly discuss the search and its results should you wish.

COST AND TIMING

The cost and turn-round time of a search depends largely on technical scope and difficulty. We therefore prefer not to quote fixed prices and times. However, we will provide free estimates of the costs and timings upon receiving basic information of your requirements. We can also work to specified budgets and deadlines by devising strategies that allow for the maximum knowledge to be obtained within your funds and timeframe.

An adaptation of our approach which we call Convergence Searching enables us to offer budget searches at a cost currently set at £600. Convergence Searching comprises carrying out highly focussed class, keyword, or combination searches through selected sources, and using promising results as the springboard for further searches if required.

We are usually able to turn around requests quickly and every effort is made to meet even the strictest of deadlines. We can provide you with an exact date on which you can expect to receive your results.

Most requests for the supply of patent and technical literature documents can be despatched the same or next day.

You are assured that the cost and timescale will be discussed with you and agreed before any work commences.

request@victorgreen.co.uk

+44-(0)20-7269-9200

+44-(0)20-7269-9210



www.victorgreen.co.uk

[Victor Green & Company](#)

[Victor Green & Company](#)